



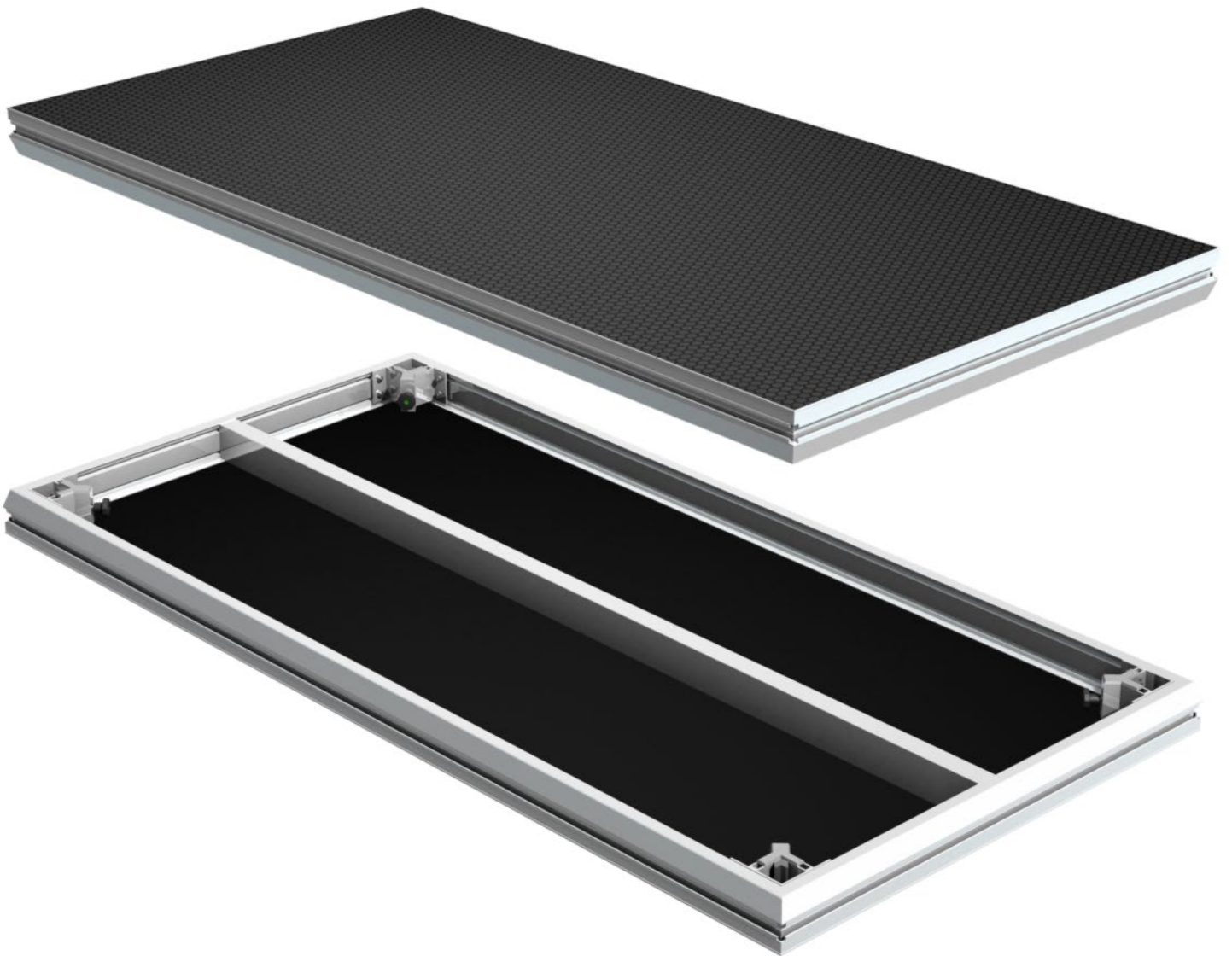
 STAGE DECK
LARCHER

*Build
with excellence*



STAGE DECK

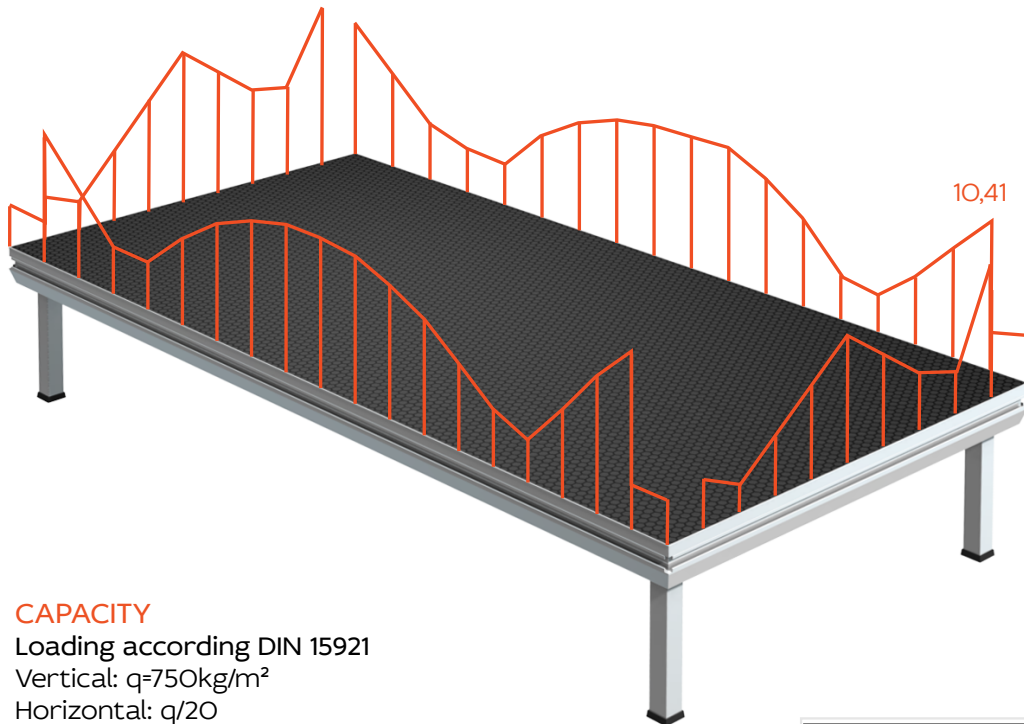
FULL VERSATILITY IN ONE PRODUCT



LARCHER is proud to launch the new Stage Deck, which combines strength, durability, stability, lightweight and total flexibility.



STRENGHT - 750kg/m²



CAPACITY

Loading according DIN 15921

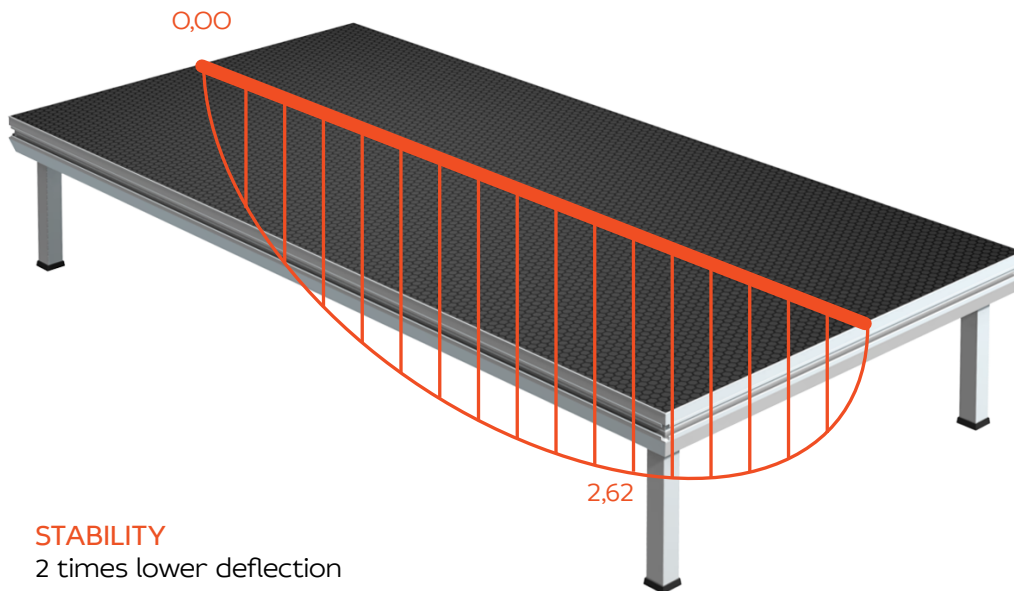
Vertical: $q=750\text{kg/m}^2$

Horizontal: $q/20$

Ingenieure für Ihre Visionen		EXPO Engineering	
Zuständigkeit	Stahl	Schnitt	
Statische Berechnung Static Analysis		Datum:	04.03.2016
		Lieferanten-Nr.:	2016020404
		Kunden-Nr.:	80902
		Sachbearbeiter-Nr.:	Uwe Rutenmund
Auftraggeber:	Everdeck SC		
Customer:	Ul. Kluczborska 13B 46 243 BxGACICA POLEN		
Projekt:	2016-0144		
Project:	Stage platform 2x1 m		
Nur gültig und rechtsverbindlich als Original mit Stempel und Unterschrift - Kopien sind nicht verbindlich Only valid and binding as an original document with stamp and signature - copies are illegal			
Expo Engineering GmbH Suerkamp 14 D-91930, Cadee Fon: +49 (0) 2520-93162-0 Fax: +49 (0) 2520-93162-220 www.expo-engineering.de			



STABILITY - MINIMUM DEFLECTION



Ingenieure für Ihre Visionen
■ Zuverlässigkeit
■ Sicherheit
■ Schnelligkeit

EXPO
Engineering

Statische Berechnung
Static Analysis

Datum: 04.03.2016
Lieferschein-Nr.: 2016030404
Kunden-Nr.: 80902
Sachbearbeiter-Nr.: Uwe Rutenmund

Auftraggeber: Everdeck SC
Customer: Uł. Kluczborska 13B
46 243 BXGACICA
POLEN

Projekt: 2016-0144
Project: Stage platform 2x1 m

Nur gültig und rechtsverbindlich als Original mit Stempel und Unterschrift - Kopien sind nicht verbindlich
Only valid and binding as an original document with stamp and signature - copies are illegal

Expo Engineering GmbH
Suerkamp 14
D-91930, Cadee
Fon: +49 (0) 2520-93162-0
Fax: +49 (0) 2520-93162-210
www.expo-engineering.de



LIGHTWEIGHT

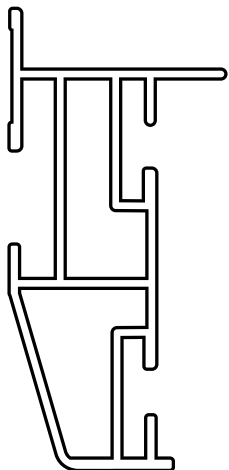


LIGHTWEIGHT

Only 32kg
for 2x1m deck



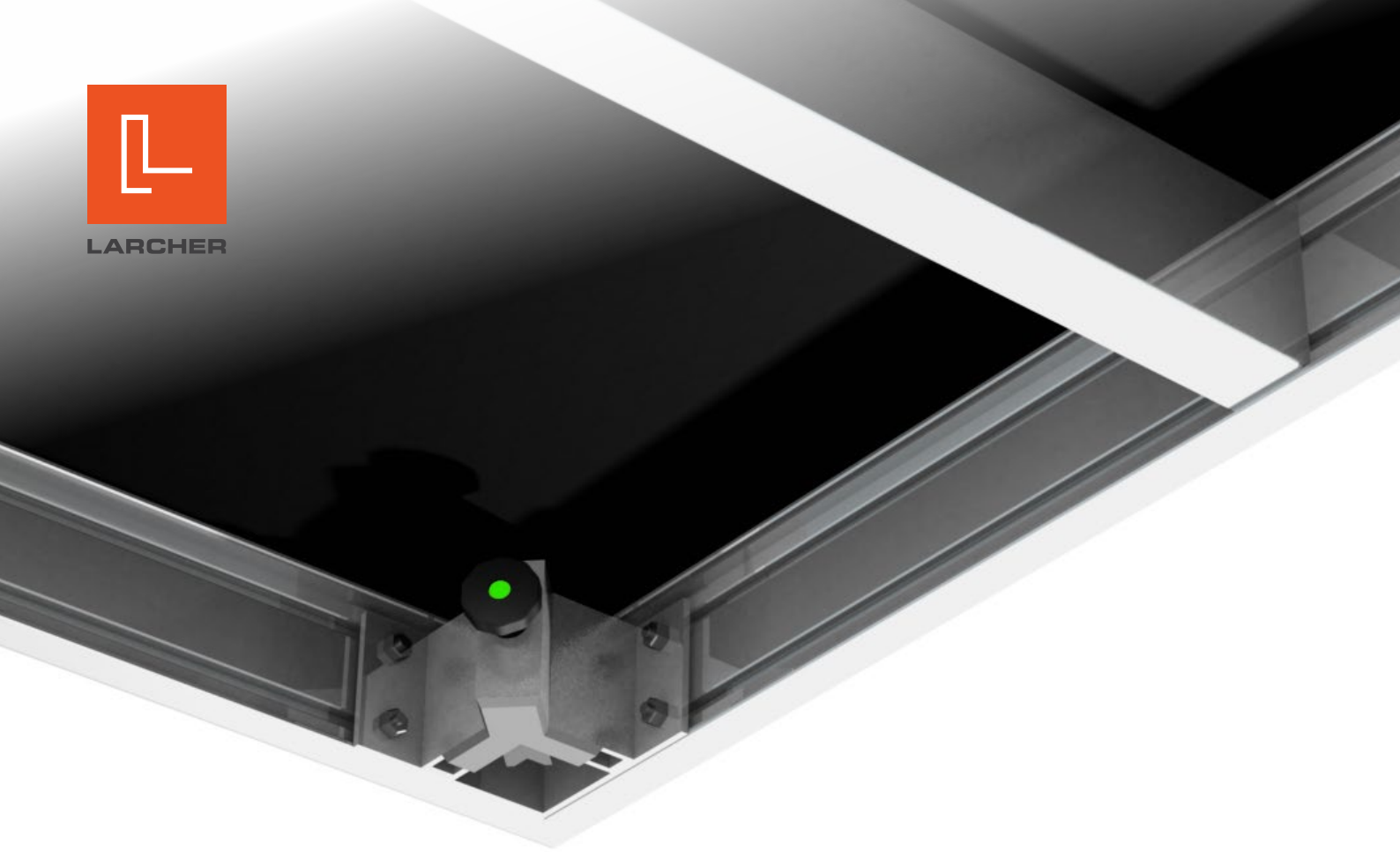
FLEXIBILITY COMPATIBLE PROFILE



Compatibility - with other leading brands.
Larcher gives you full flexibility!

Shape improvement - angle on the outside
compatible with Layher and Nivtec beam without
using any special adaptors.

Low storage costs - only 9cm stacking height



FLEXIBILITY UNIVERSAL LEG CORNER

PROBLEM

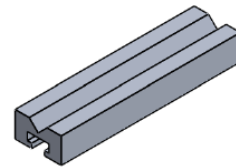
Main systems on the market provide legs 48,3 round, 50x50 square, 60x60 square. Usually to fit the leg corner you need to exchange pressure cube inside the corner.

In addition the pressure cube is really tiny that's why all force is going only to the longer screw and this is not providing great stability.

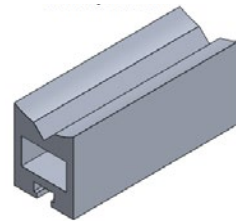
SOLUTION

Our new pressure cube is universal for above legs 50x50sq, 60x60 sq, and 48,3 round.

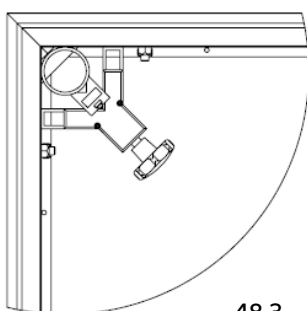
There is no need to exchange anything! To achieve this we have extended our corner. No matter what type of the leg we will use the pressure cube is always staying inside of the corner profile to give max stability.



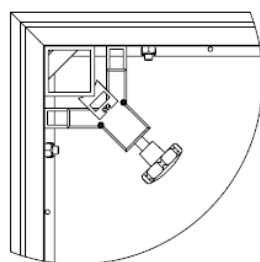
Standard pressure cube



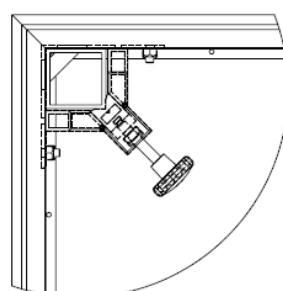
Larcher pressure cube



48,3



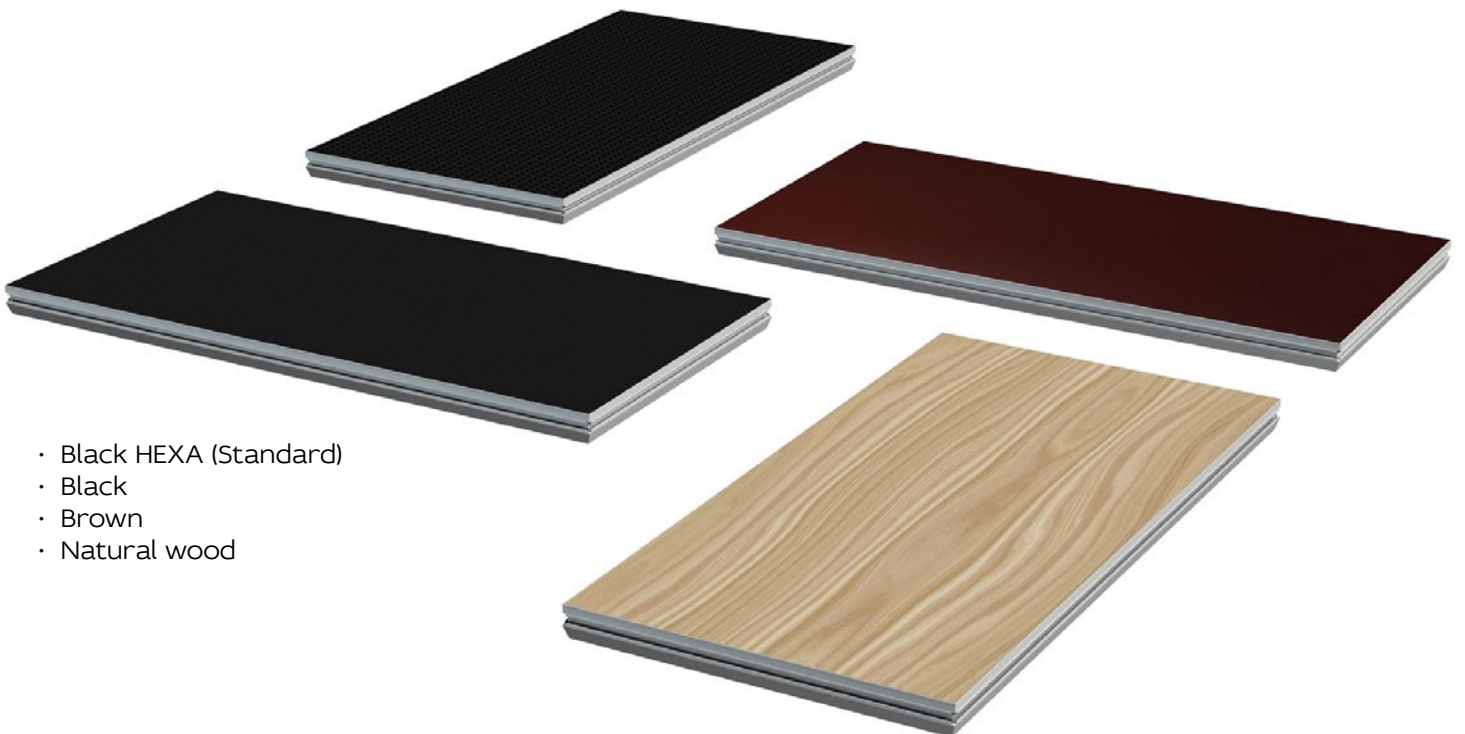
50x50



60x60



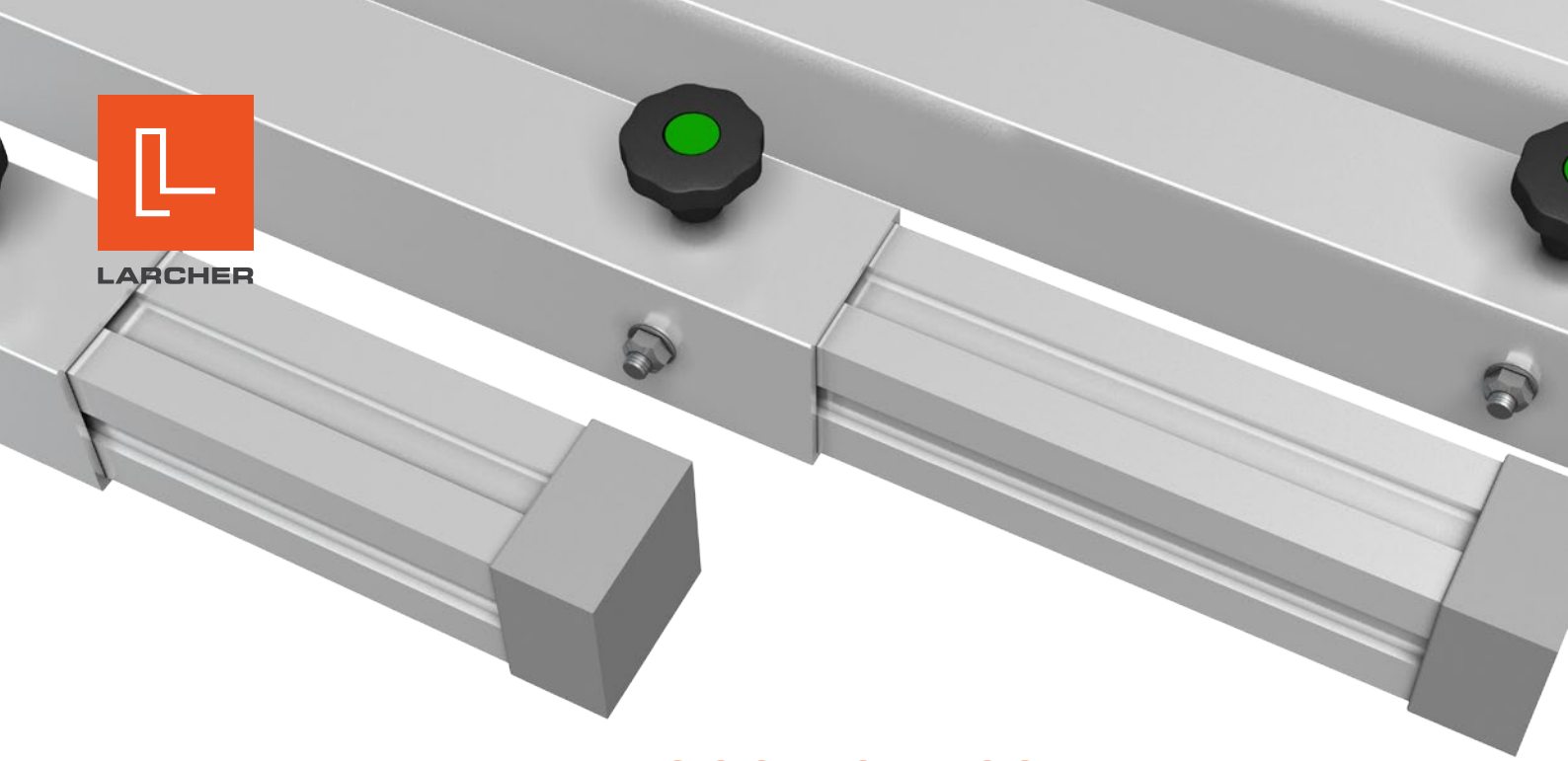
AVAILABLE FINISHES



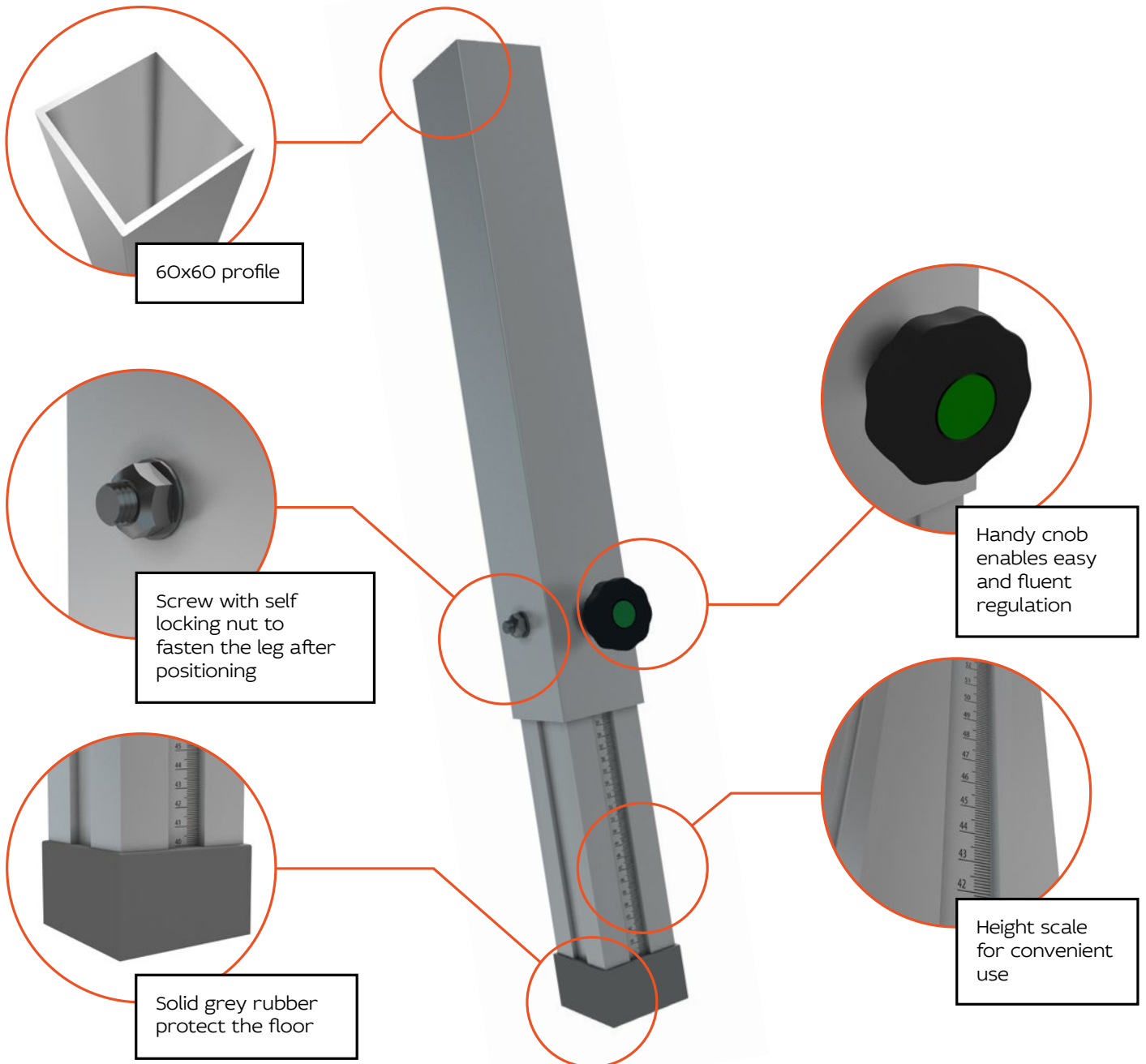
- Black HEXA (Standard)
- Black
- Brown
- Natural wood



- transparent
- black plexi
- white plexi



TELESCOPIC LEGS



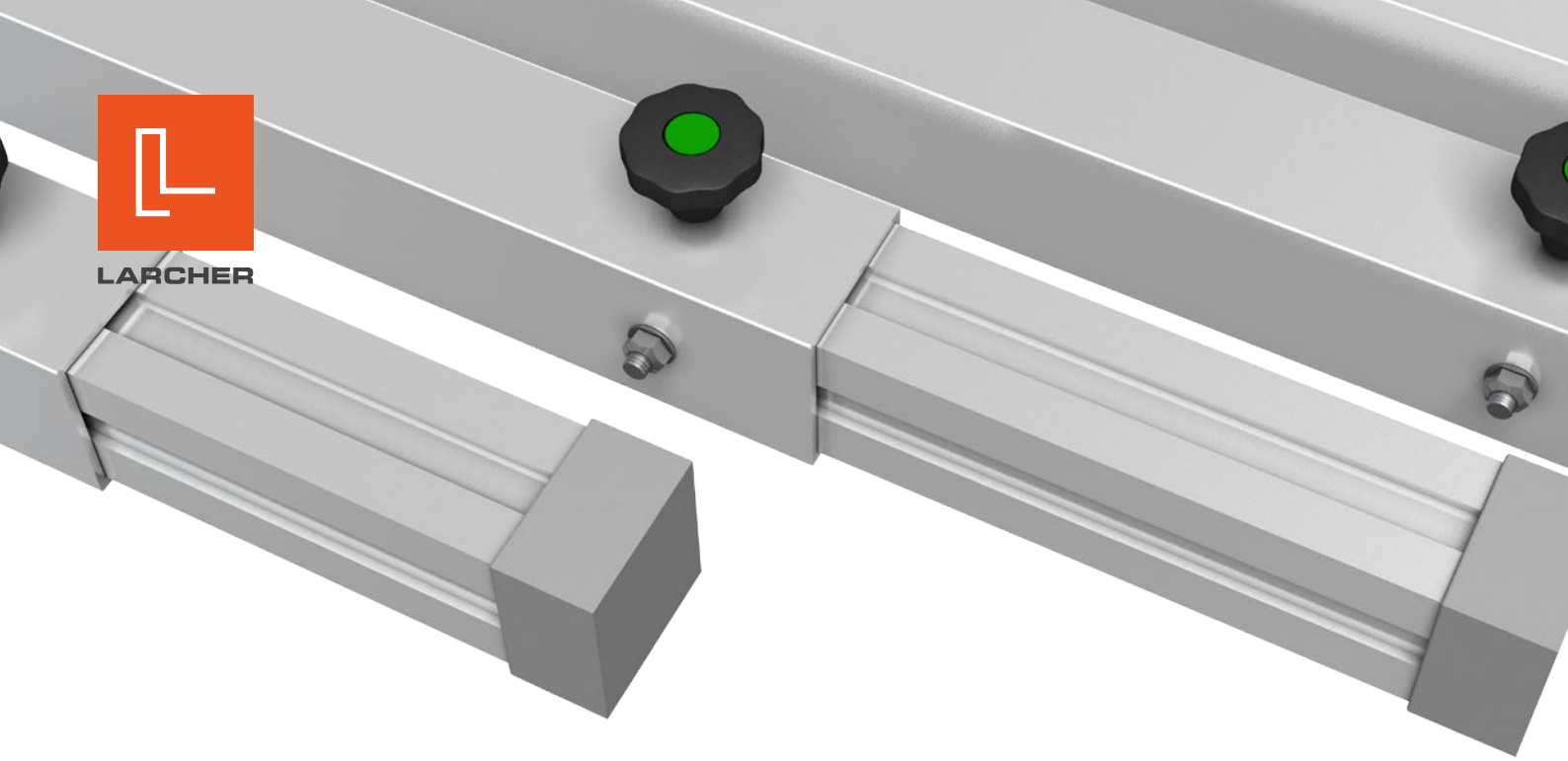
60x60 profile

Screw with self locking nut to fasten the leg after positioning

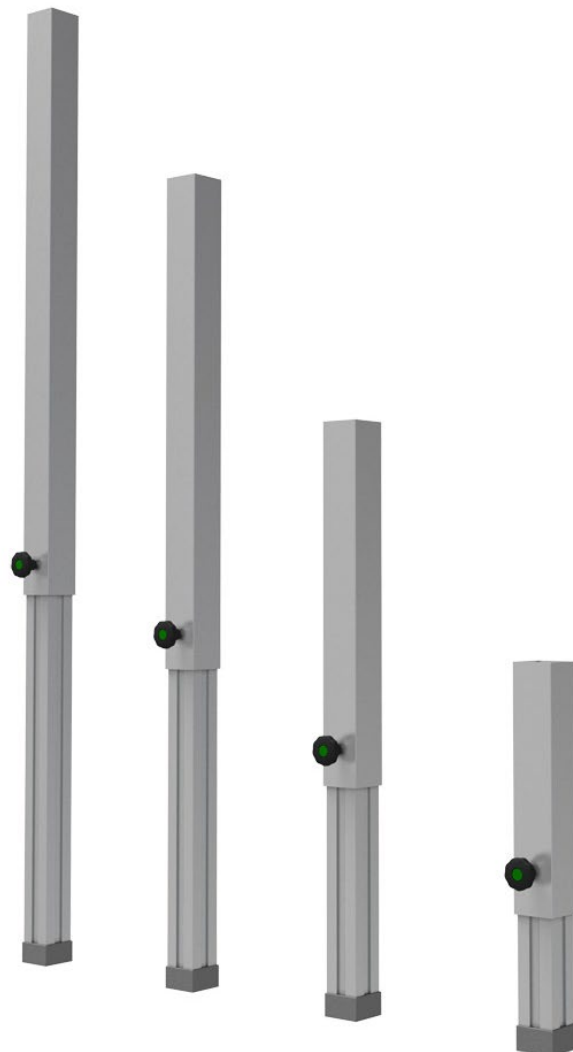
Solid grey rubber protect the floor

Handy knob enables easy and fluent regulation

Height scale for convenient use

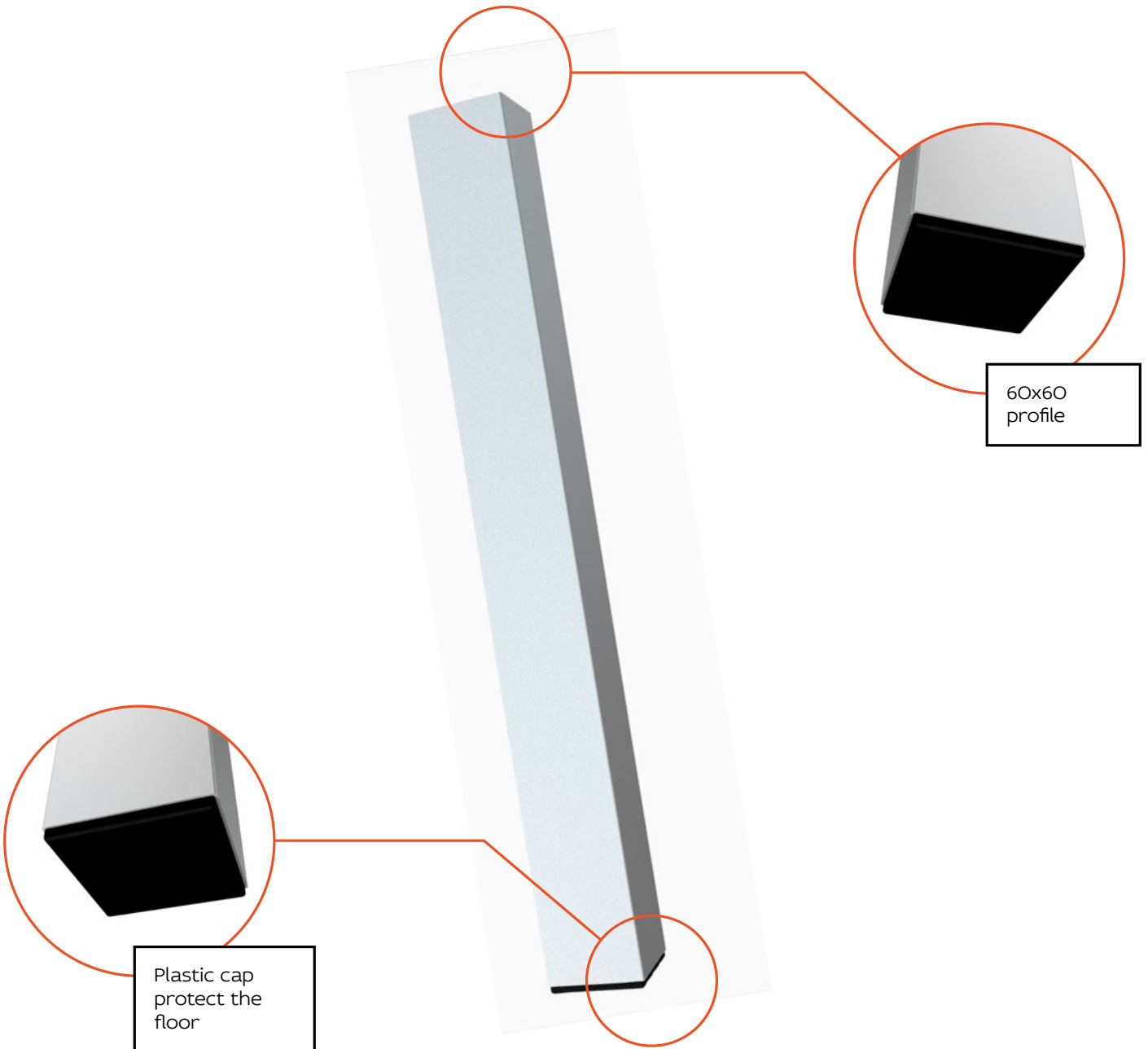


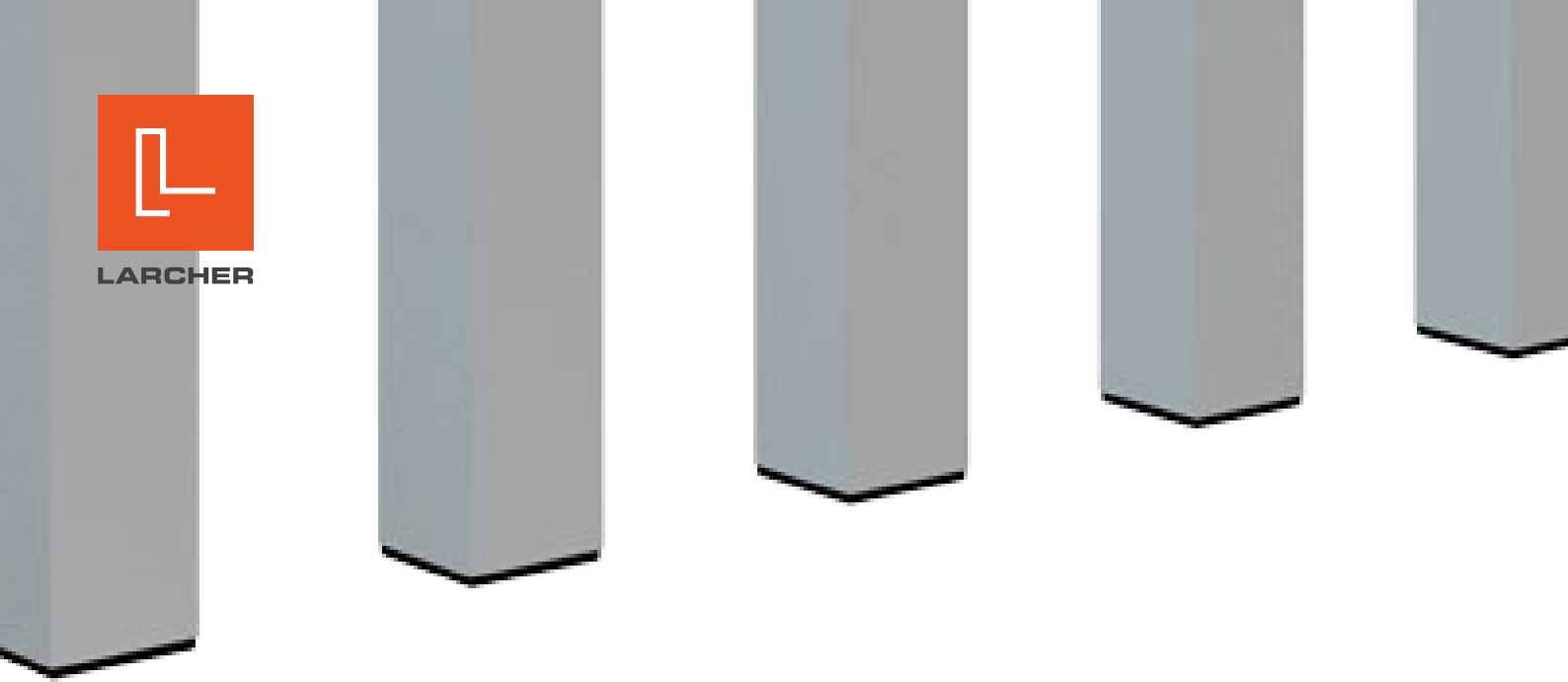
PRODUCT CODE	HEIGHT in cm (H)	SUITABLE FOR
VTL40	40-60	STAGE DECK
VTL60	60-100	
VTL80	80-140	
VTL100	100-180	



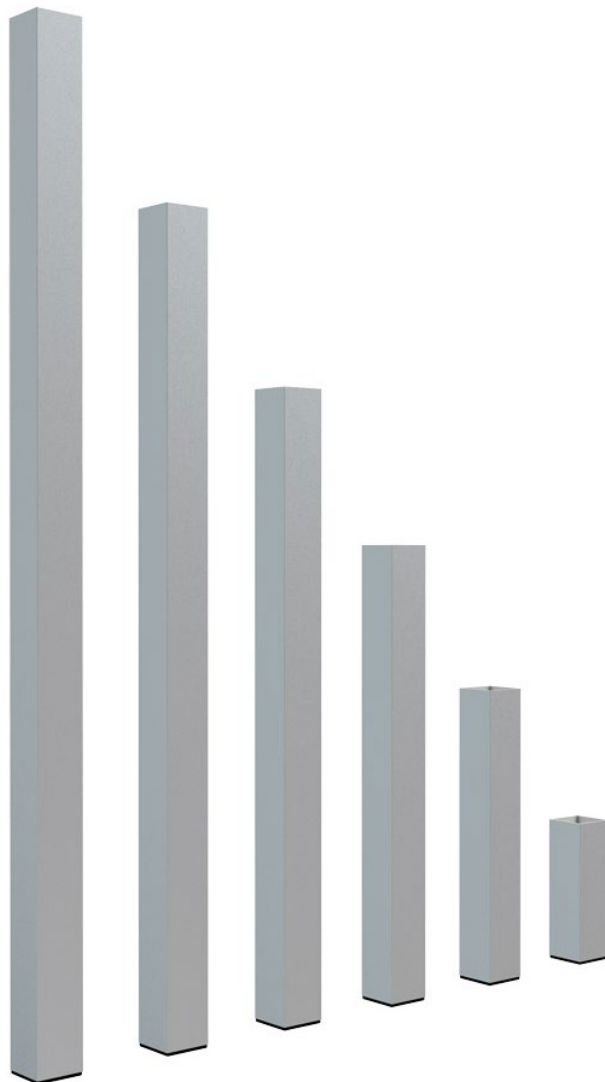


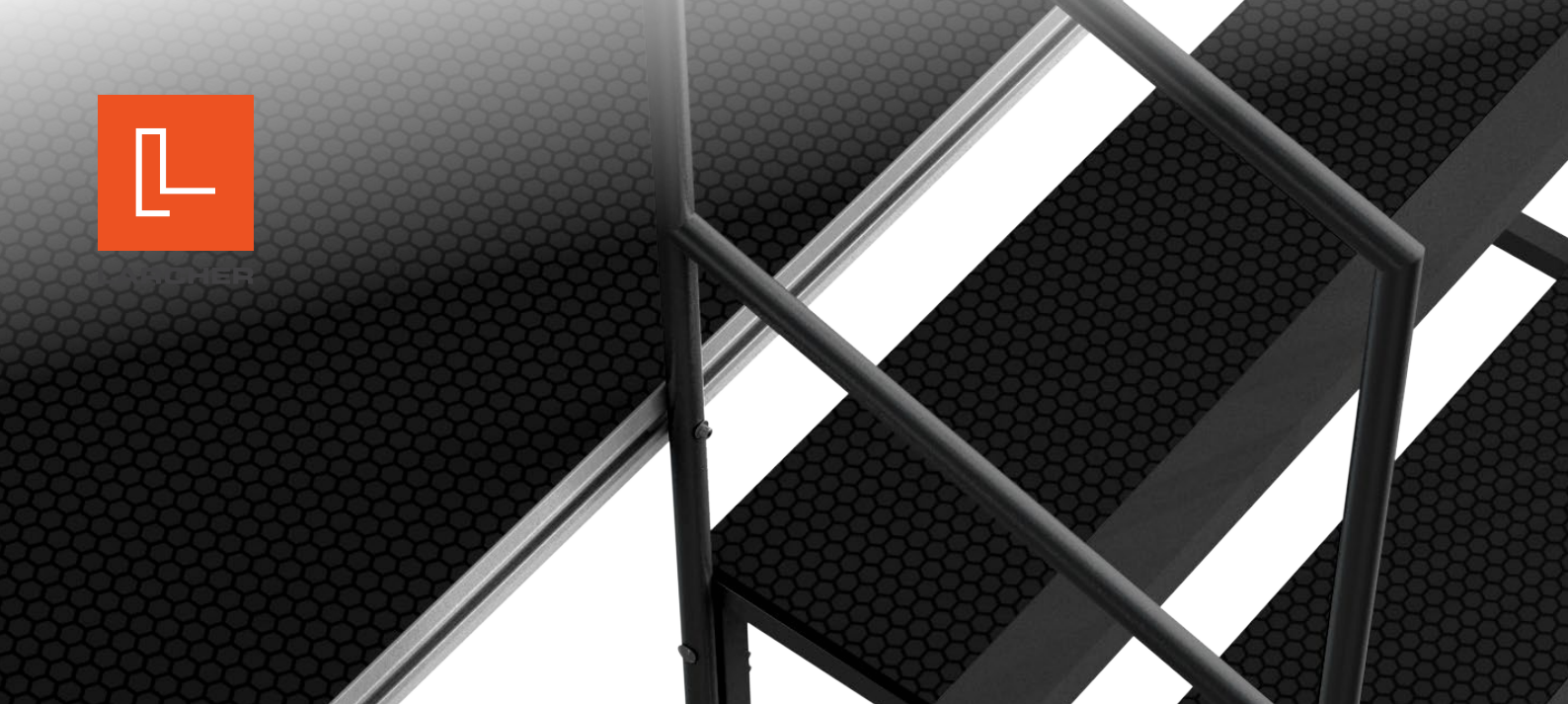
SET LEGS





PRODUCT CODE	HEIGHT in cm (H)	SUITABLE FOR
VFL20	20	STAGE DECK
VFL40	40	
VFL60	60	
VFL80	80	
VFL100	100	
VFL120	120	

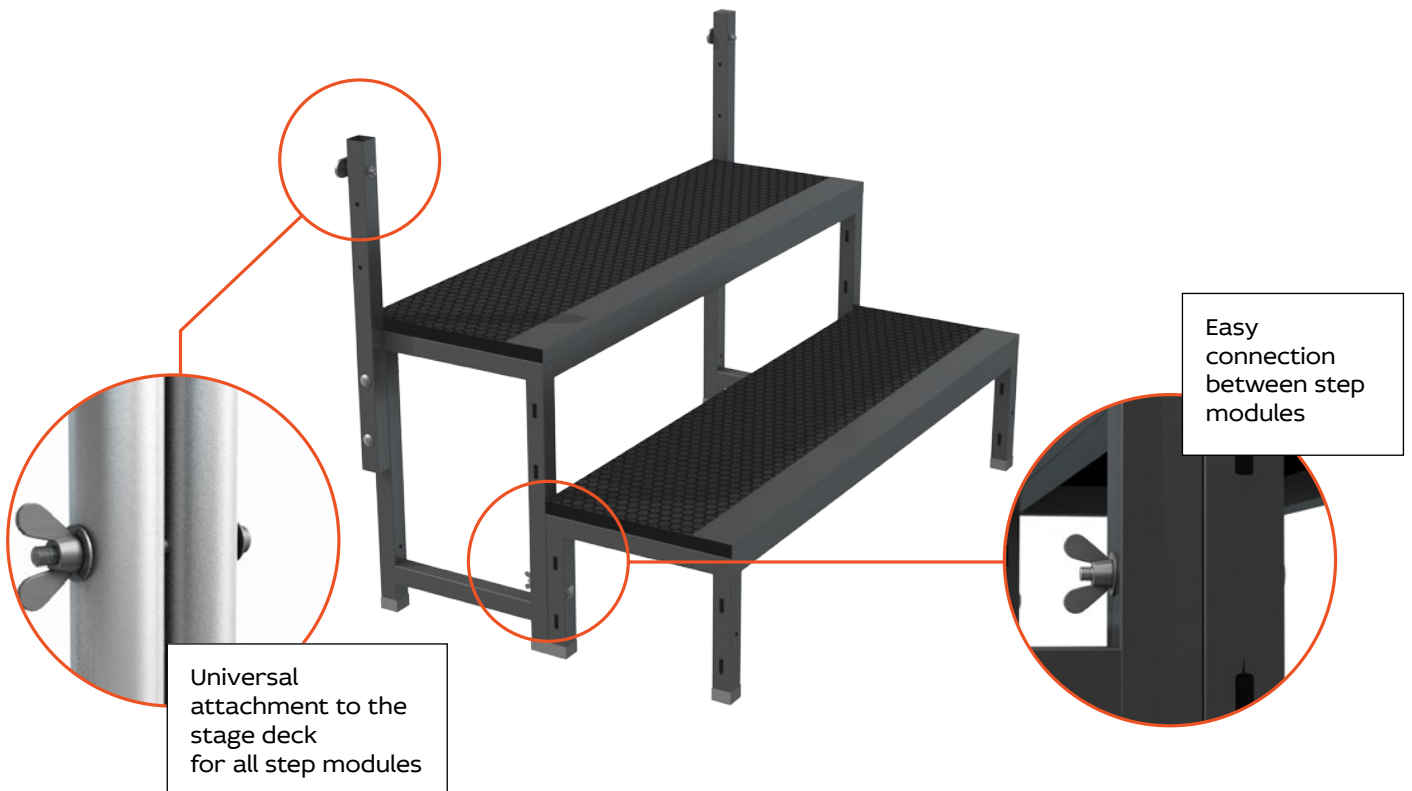


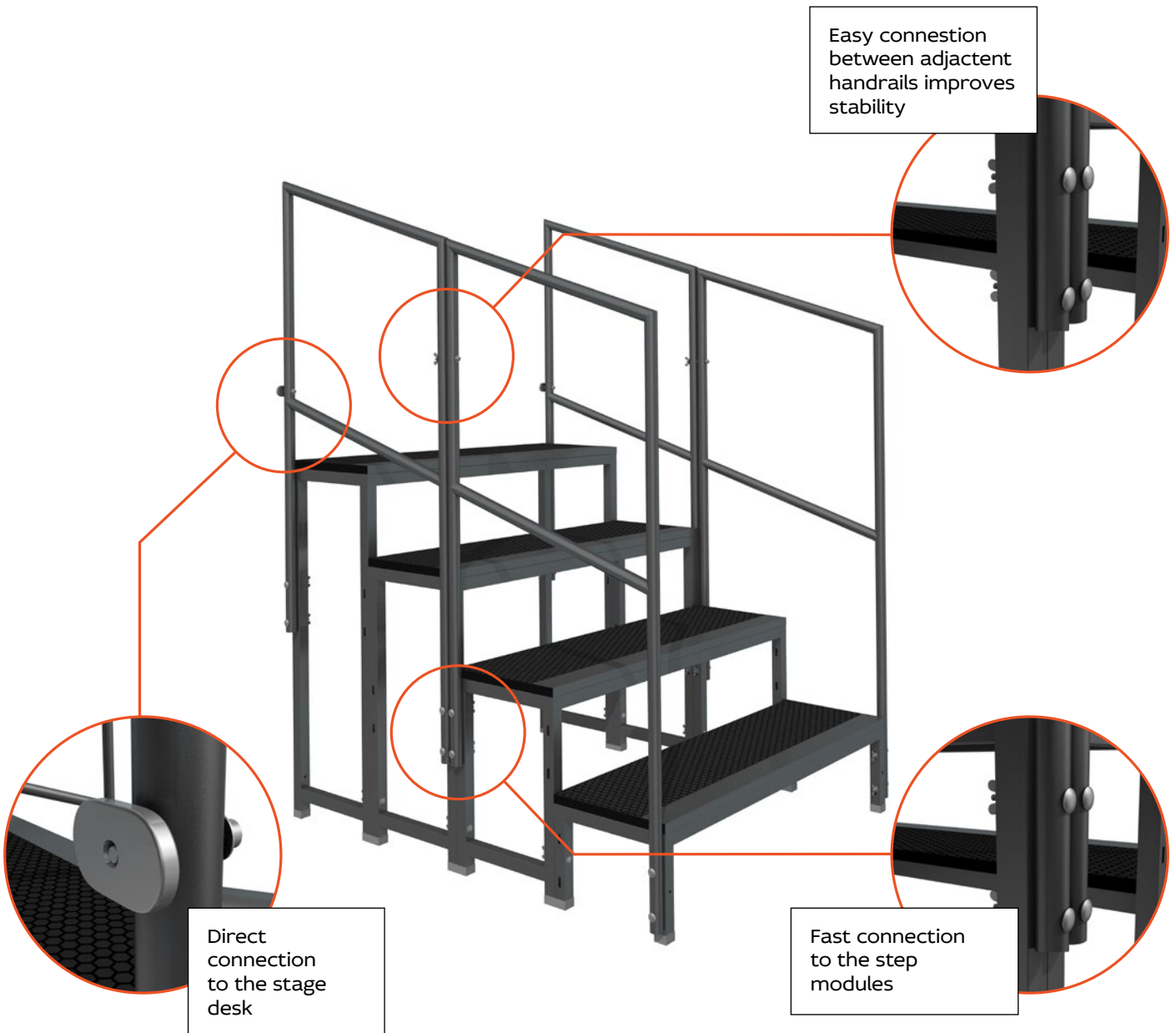
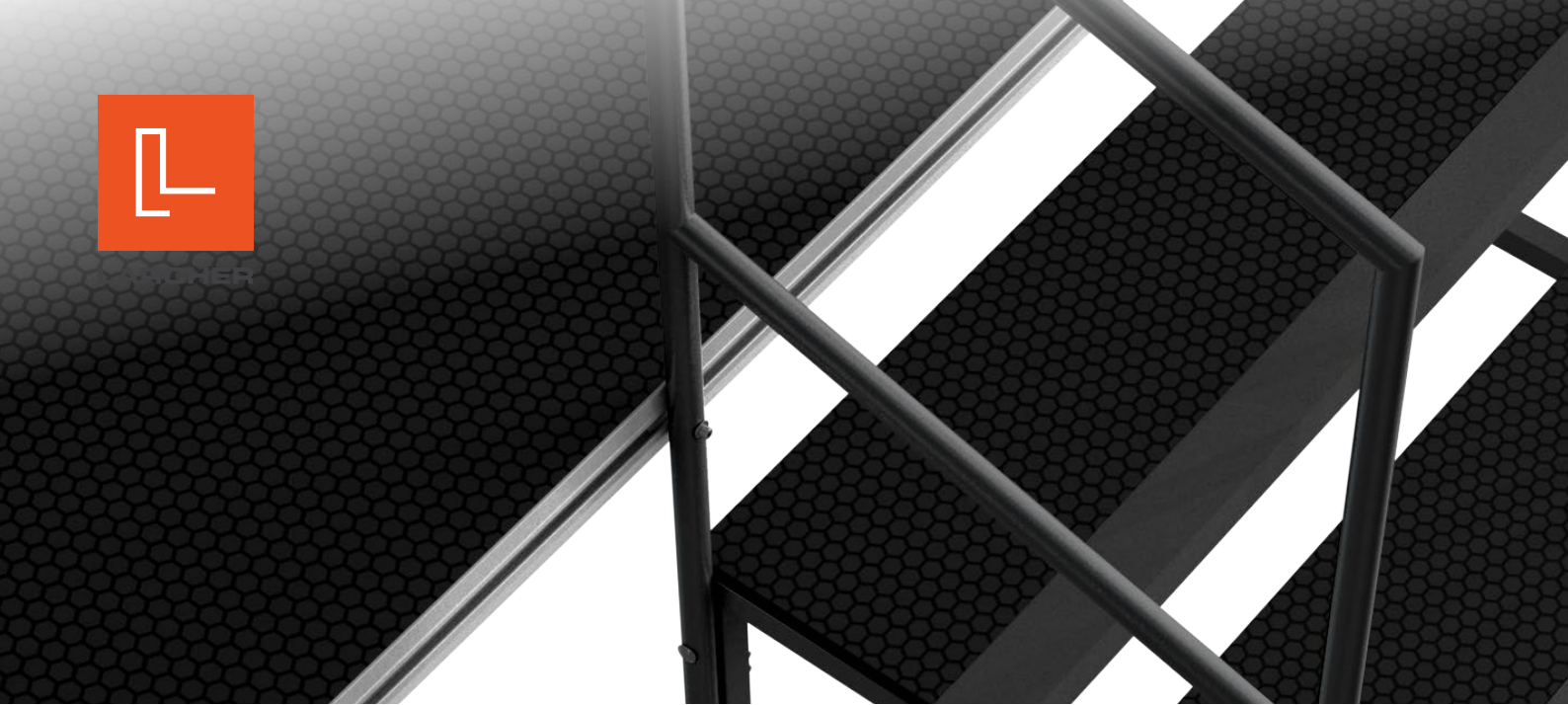


MODULAR STAIR STEPS

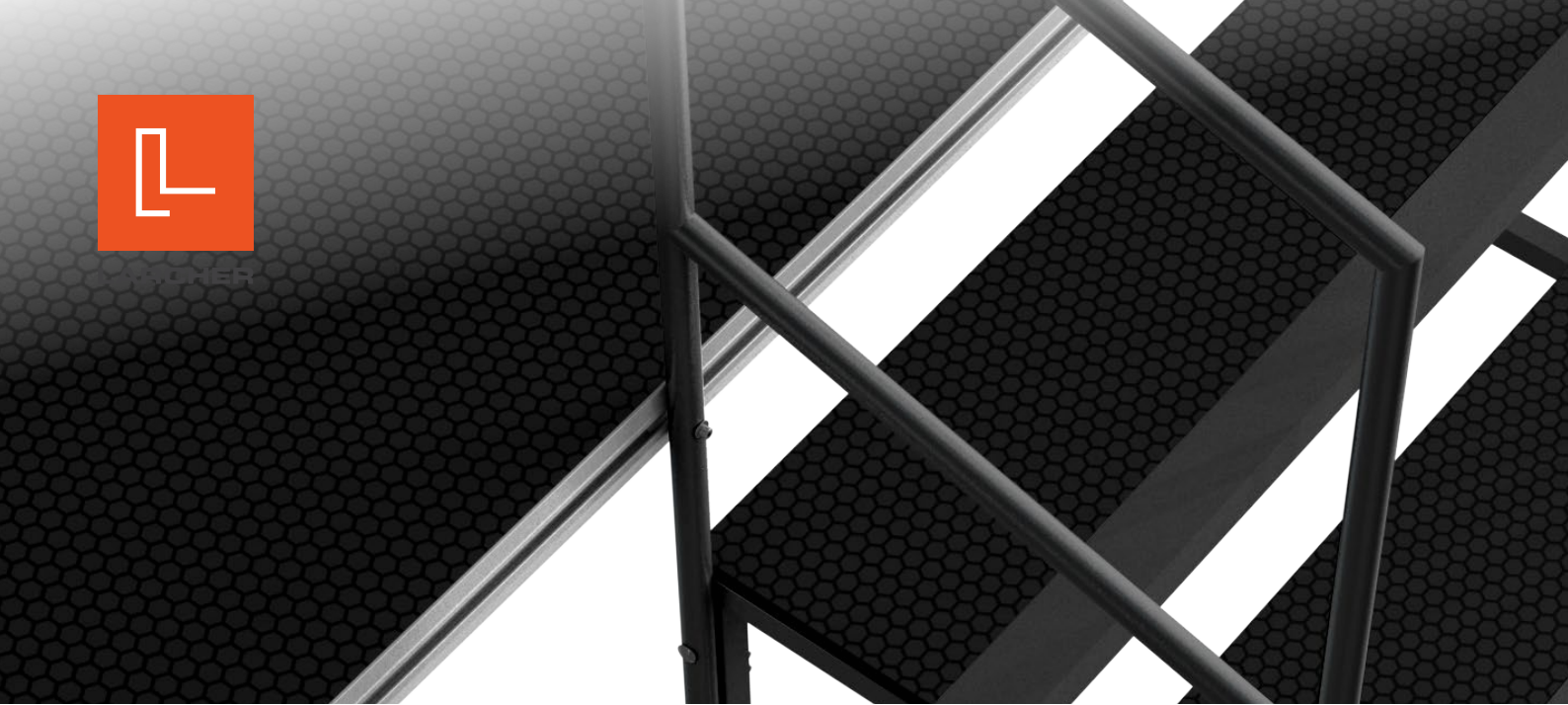


Different step modules can be used separately or together for several stage heights





Handrail for modular stairs, assembled on two adjacent steps



VSM20
Modular stair step
20cm



VSM40
Modular stair step
40cm



VSM60
Modular stair step
60cm



VSM80
Modular stair step
80cm

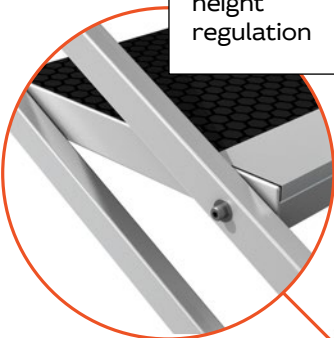


Modular stairs handrail

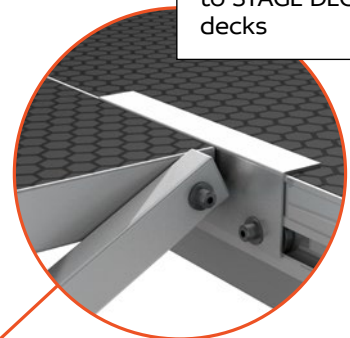


LARCHER

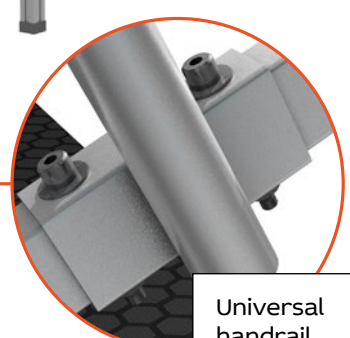
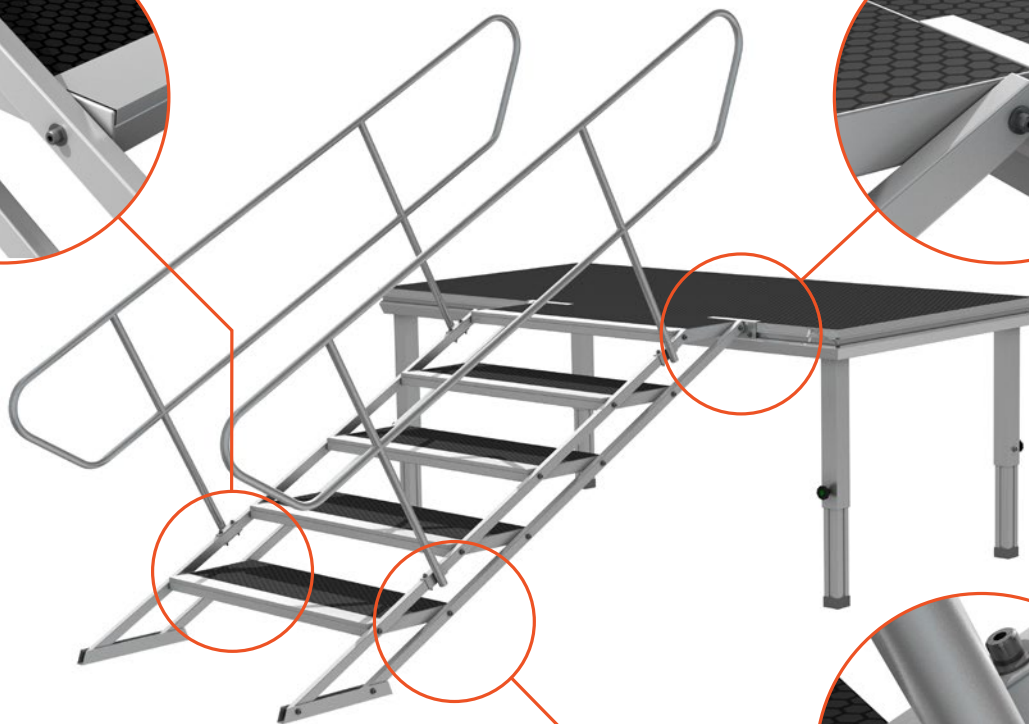
ADJUSTABLE STAIRS



Adjustable steps for fluent height regulation



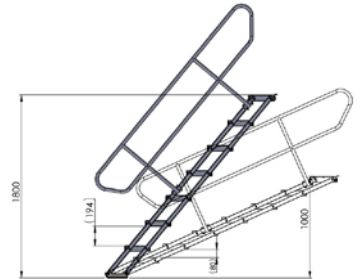
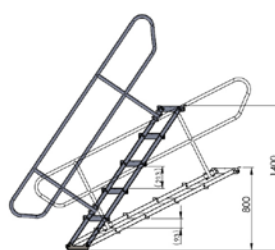
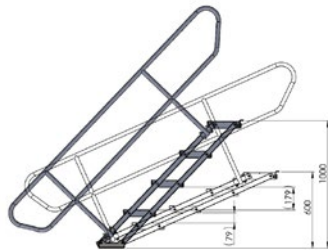
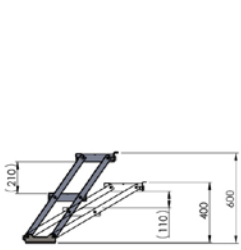
Easy assembly to STAGE DECK decks



Universal handrail suitable for adjustable stairs with 4, 5 and 7 steps



LARCHER



VAS-2
2 step adjustable stair
40-60cm

VAS-4
4 step adjustable stair
60-100cm

VAS-5
5 step adjustable stair
80-140cm

VAS-7
7step adjustable stair
100-180cm

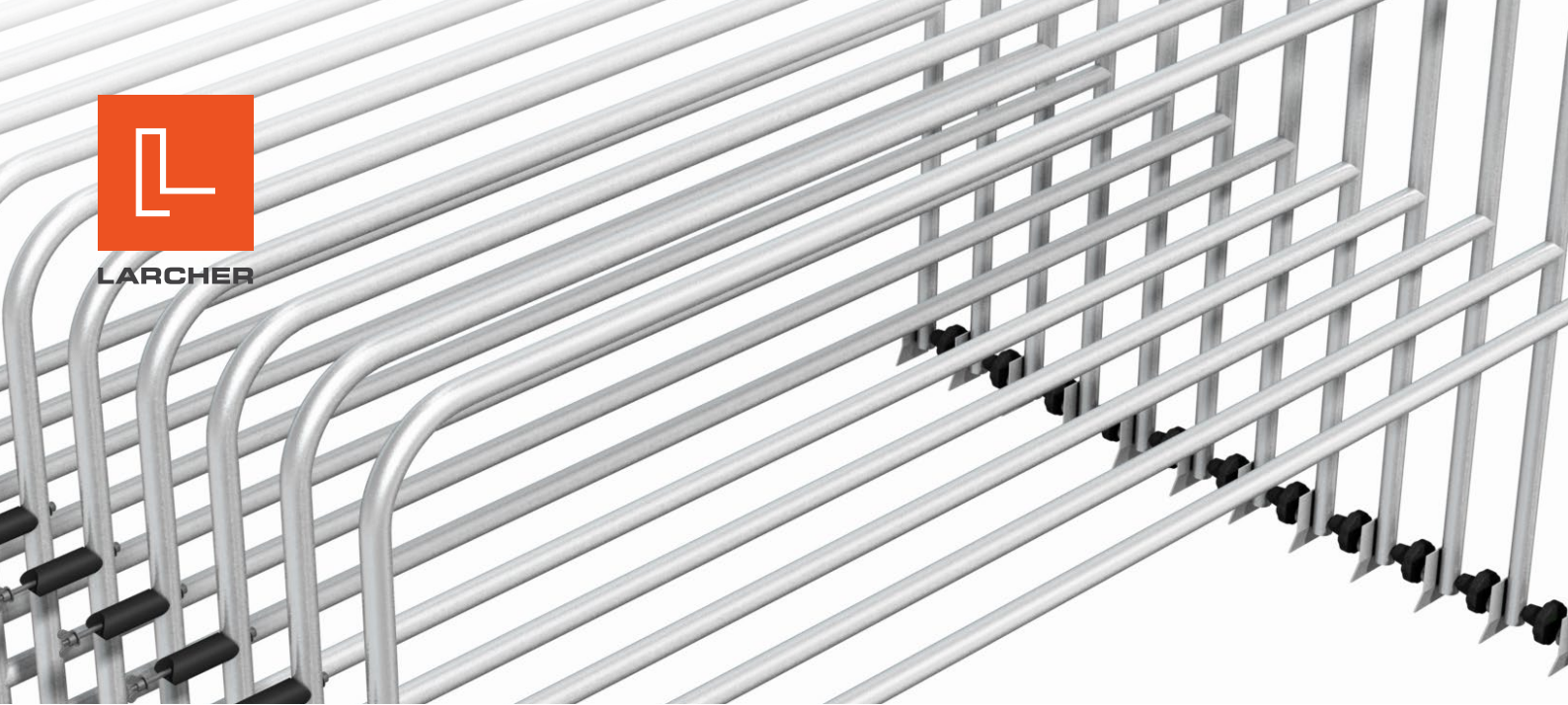


VASH-L
Adjustable stair handrail
left

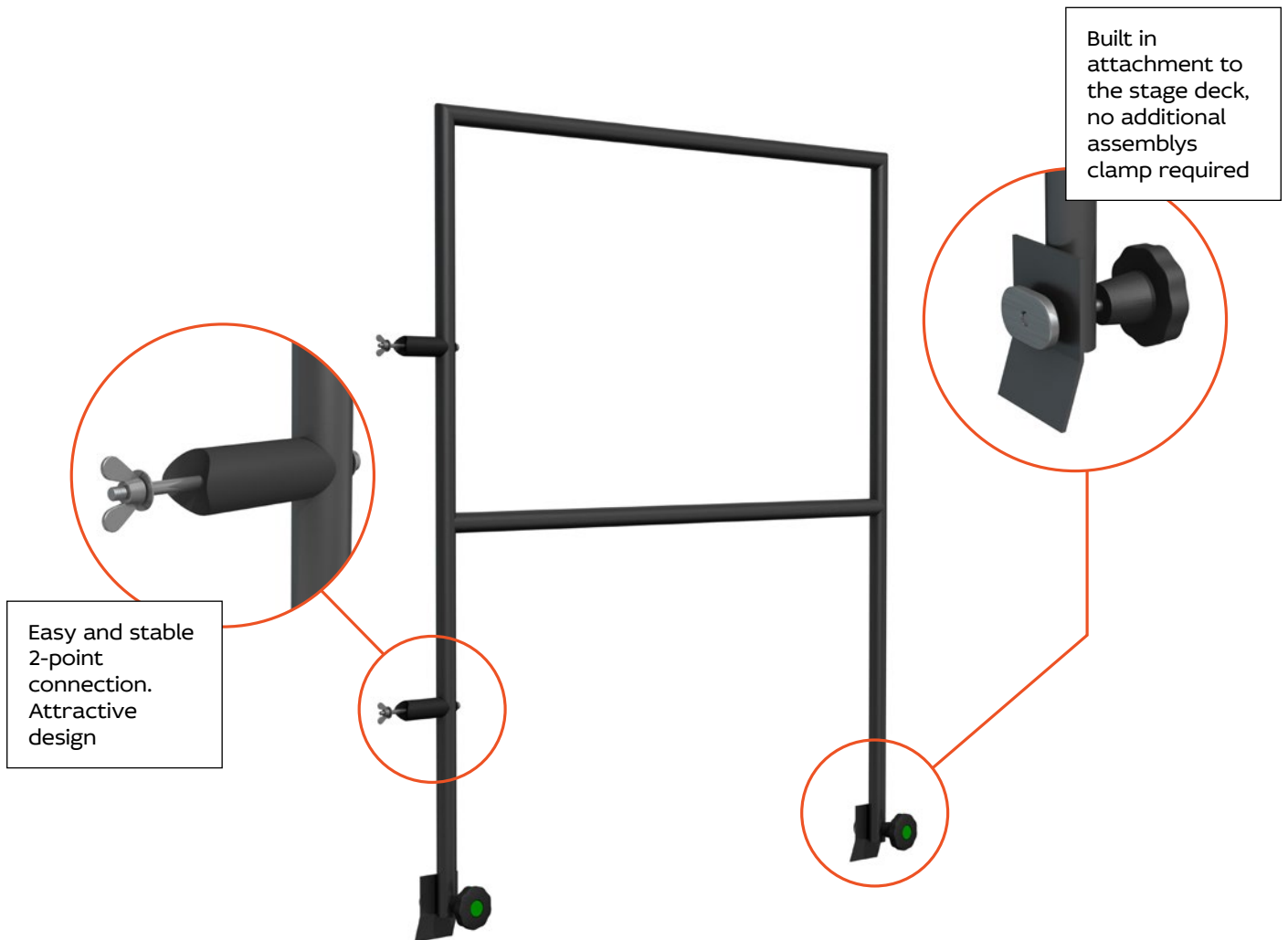


VASH-R
Adjustable stair handrail
right

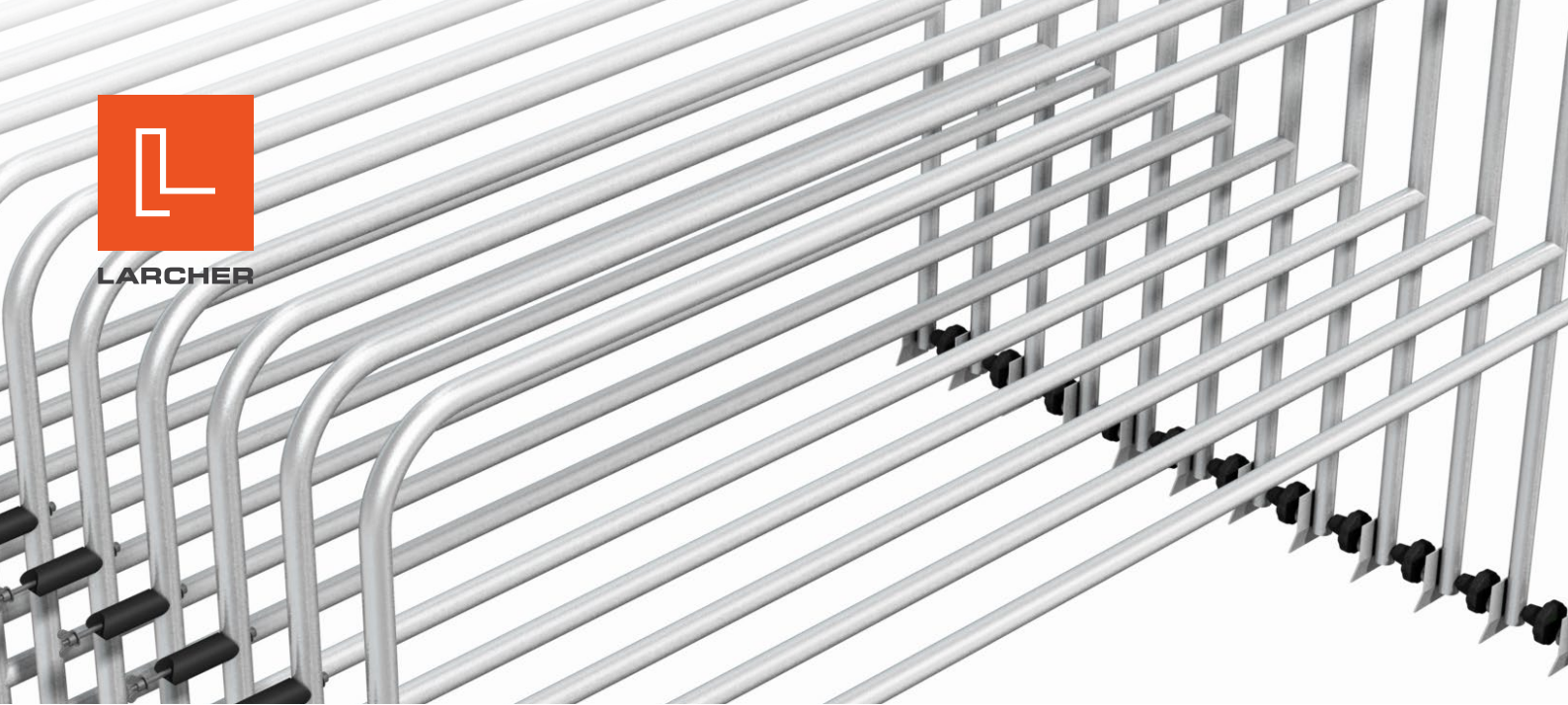
Adjustable stair handrails are universal for 4, 5 and 7 step handrails.



STAGE HANDRAILS



2m and 1m steel handrails for stage decks, galvanized or with black powder coating.
For standard use with no public access (30kg/m).
Other lengths on request.



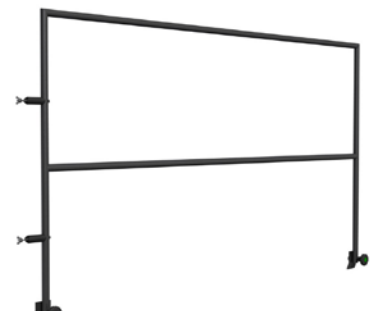
Standard handrails



VHO.5
Stage handrail 0,5m

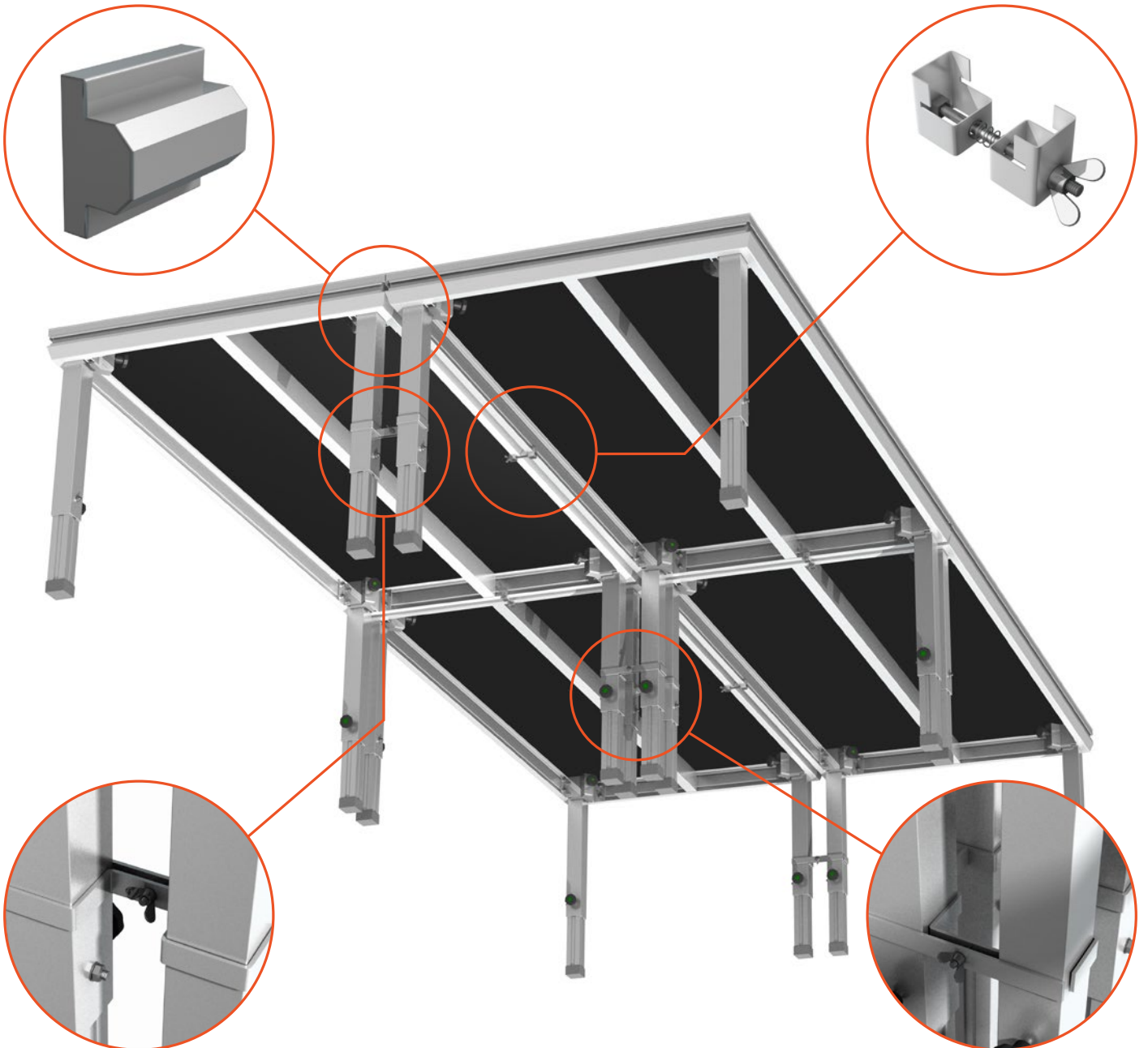


VH1
Stage handrail 1,0m



VH2
Stage handrail 2,0m

CLAMPS AND ACCESSORIES

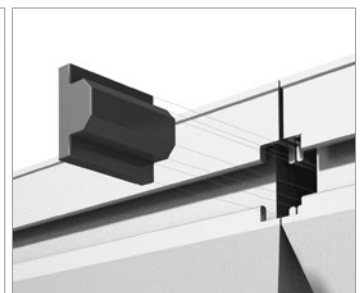
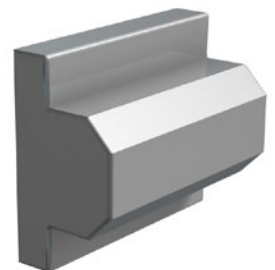




LARCHER



We have designed our stage deck series in order to minimize the quantity of accessories which are needed to build the stage. You need only 4 loose connection accessories to build a whole stage system. It makes your assembly much easier and saves your time.



Deck 2 Deck clamp
Connection clamp to connect two adjacent stage decks.
Recommended quantities - 2 pcs for 2m connection side and 1 pcs for 1m side.

Leg 2 Leg clamp
Steel clamp for connection between 2 adjacent stage legs

4 leg clamp
Steel clamp for connection between 4 adjacent legs

Leveling insert
Leveling insert to keep adjacent decks on the same level on an uneven ground



TRANSPORT TROLLEYS



VTT - deck trolley
Transport trolley enables to carry up to
15 pcs of 2x1m STAGE DECK decks



VDT - door transport trolley
Transport trolley for up to 6 pcs of
STAGE DECK decks in vertical position



LARCHER



*We take you
to the next level!*



LARCHER

Larcher Maschinenbau GmbH
Larcher Costruzioni Meccaniche Srl
Handwerkerstraße 14/1
39011 Lana (BZ) IT
T +39 0473 561 241
info@larcher.bz.it
info@pec.larcher.bz.it
www.larcher.bz.it